



Photo 7. Location 2-b east, Quarry Road (SW off Brittany Drive). Randomly oriented branches (corallites) of colonial corals on a near-horizontal surface of bedding in limestone. 15 cm pen. Coral was probably broken and fragments transported by storm activity.

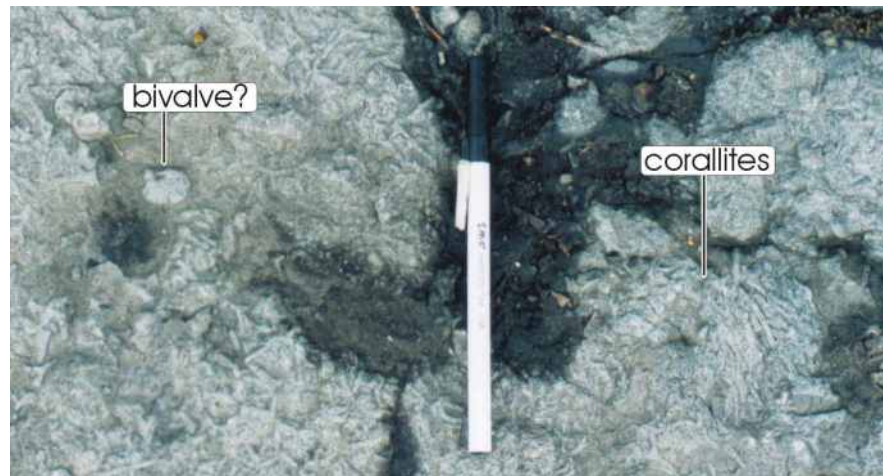


Photo 8. Location 2-c, entrance to apartment driveway, St Laurent Blvd. Corallites and other fossils on horizontal bedding surface in limestone. 15 cm pen.